





إبتكار الحلول الذكية


FOR SMART AND TECHNOLOGY INFORMATION


“Revolutionize Your Communication and Security”

JANUARY 2025 ISSUED

 www.ibtikar.com.sa

 054 310 2345

 info@ibtikar.com.sa

 Saudi Arabia - Riyadh



About Us

A leading provider of IT solutions and telecommunication services, with over 8 years of experience in the industry. We are dedicated to helping businesses achieve their goals by providing innovative and reliable technology solutions that enhance productivity, efficiency, and profitability. Our team of experienced professionals is committed to delivering exceptional service and support to our clients, ensuring that their technology systems are always running smoothly and meeting their evolving needs.



TRUSTING

We believe that trust is the key to building long-term relationships with our customers and partners.



TRUSTING

We are dedicated to earning and maintaining that trust through our commitment to excellence, ethical business practices, and a relentless focus on customer satisfaction.



SUSTAINABLE

Focus on delivering sustainable solutions that help our customers reduce their environmental impact.



RELATION

We are proud to be a company that is dedicated to building strong relationships with our customers and partners.

Join to our social media account



ibtikar.sa



ibtikar_sa



ibtikar.sa

Our Vision

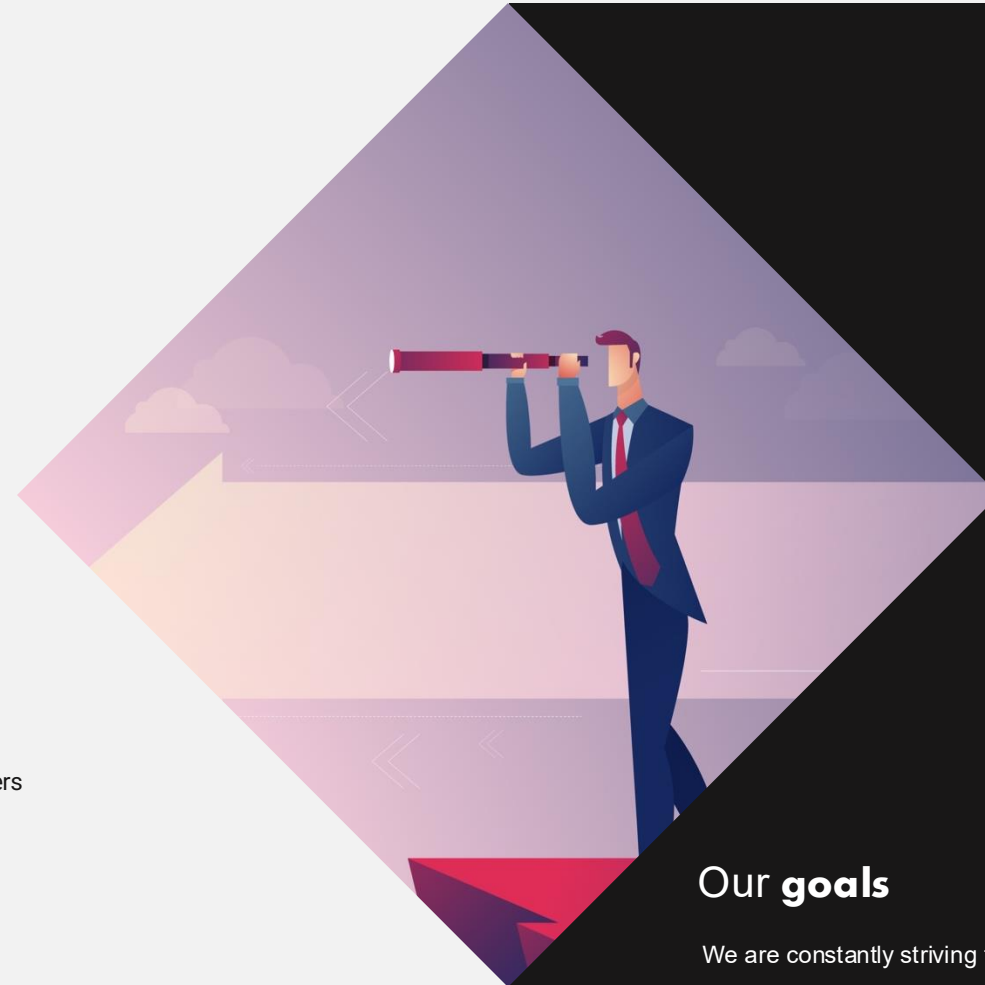
is to be the leading provider of innovative and sustainable IT solutions and telecommunication services that empower businesses to achieve their goals. We are committed to delivering exceptional service and support to our customers and partners, and we believe that our success is directly tied to their success.

240+ Project

We believe that our success is built on a foundation of trust, transparency, and collaboration.

35+ Partner

We are committed to building strong relationships with our customers and partners, and we believe that by working together,



Our goals

We are constantly striving to improve our offerings and stay at the forefront of technology



Our Mission

is to empower businesses with innovative and sustainable IT solutions and telecommunication services that drive success. We are committed to delivering exceptional service and support to our customers and partners, and we believe that our success is directly tied to their success.



Providing Solutions

Commitment to excellence, innovation, and sustainability. We are constantly striving to improve our offerings and stay at the forefront of technology, and we believe that our focus on delivering exceptional customer service



Relationships

We believe in the importance of building strong relationships and earning trust through transparent communication and ethical business practices. We are committed to delivering on our promises and standing behind our products and services.



Commitment

we are proud of our mission, and we are committed to working tirelessly to achieve our goals. Contact us today to learn more about our solutions and how we can help your business succeed.



إبتكار الحلول الذكية

Our Value

Our Success Projects

success stories



With our cutting-edge solutions, we empower businesses to exceed customer expectations, foster loyalty, and make a meaningful difference in their industries



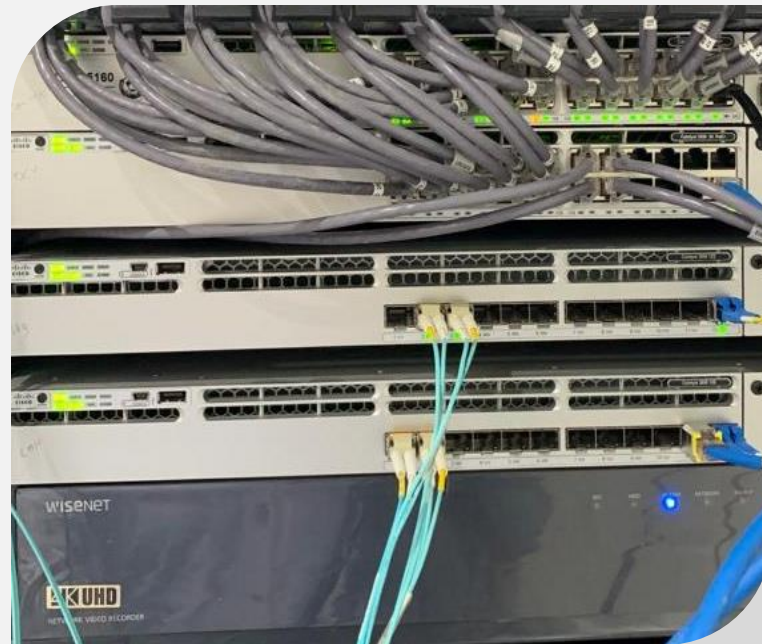
Our Partners



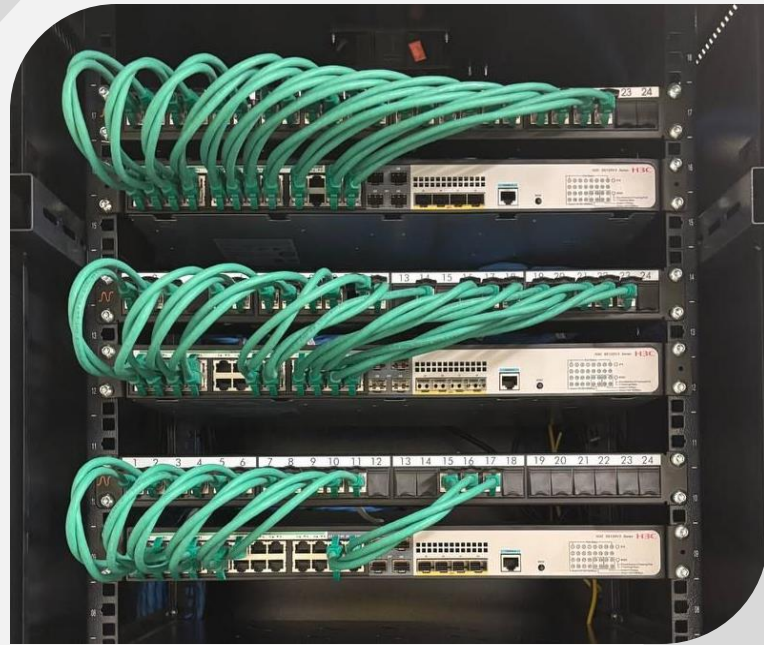
Latest Project



Latest Project



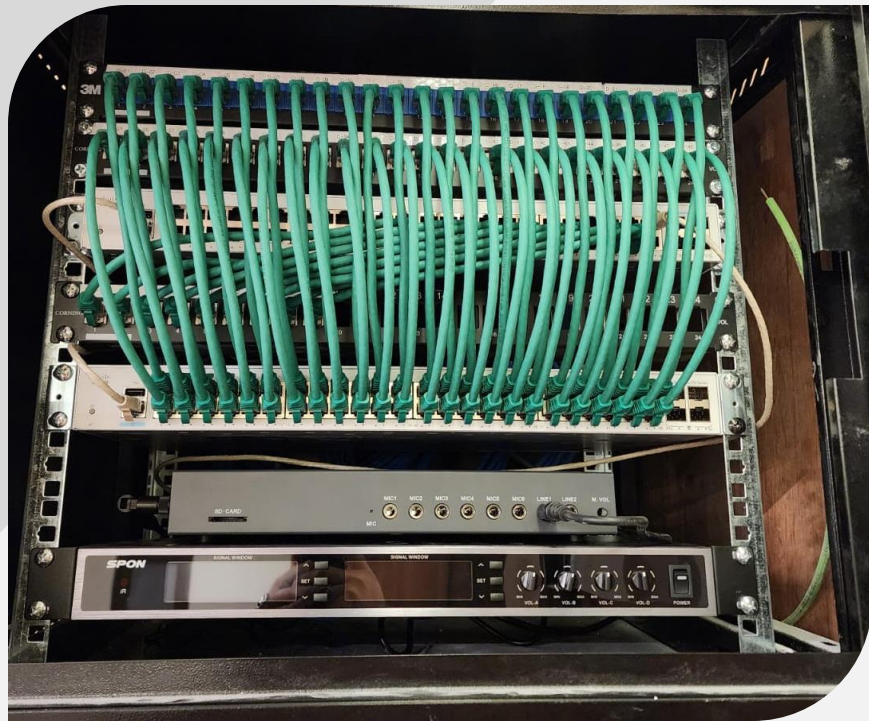
Latest Project



Latest Project



Latest Project



Latest Project



People Counting System

provide a wide range of high-quality, advanced people counting sensors that utilize state-of-the-art technologies such as thermal imaging, video analytics, and infrared beams.



Call Center System

We specialize in delivering state-of-the-art technology that enhances customer interactions, boosts agent productivity, and optimizes call center performance. With a focus on innovation and customer satisfaction, we empower businesses to deliver exceptional customer experiences.

Our Service

Our company is a leading provider of IT telecommunications solutions, specializing in the supply, installation, testing, and commissioning of a range of systems and services. We have a team of highly skilled professionals who are experts in their respective fields, including network engineering, software development, and project management.



Networking & IP Telephone services

Our team of experts specializes in network design, implementation, and optimization, ensuring robust and secure connectivity



Automation system

With a focus on efficiency, productivity, and sustainability, we offer cutting-edge automation solutions that streamline operations.



ERP System & Software Development

Implementing ERP systems that integrate and streamline various business processes, including finance, human resources, supply chain management.



Audio & Visual System

Implementing high-quality audio systems tailored to meet the unique needs of our clients.



Smart System Solutions

Offer comprehensive solutions that optimize processes, enhance efficiency, and enable intelligent decision-making.



CCTV System & Access Control Security

Designing, installing, and maintaining state-of-the-art CCTV systems tailored to the specific needs of our clients. Our solutions include high-definition cameras.

Why Choose Us

We strive to set ourselves apart by providing exceptional service and support, innovative solutions, and a commitment to sustainability and ethical business practices. Here are some reasons why you should choose:



Experience

With over 8 years of industry experience, we have a proven track record of delivering high-quality solutions that meet the unique needs of our customers.



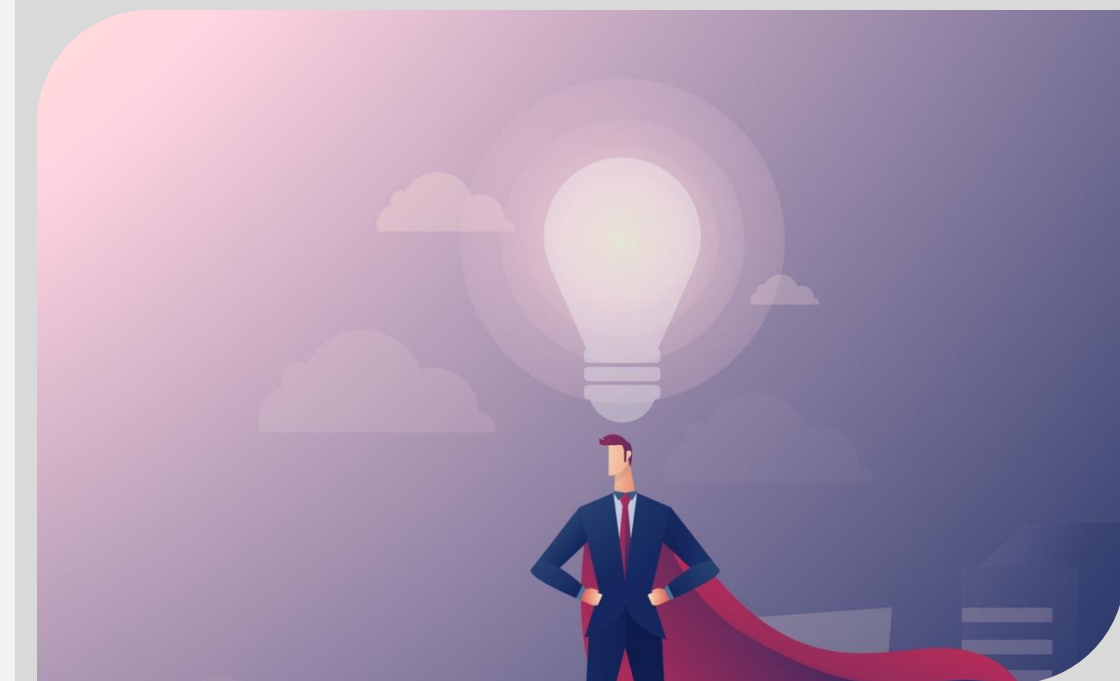
Exceptional Service and Support

Our team of highly skilled professionals is dedicated to delivering exceptional service and support to our customers and partners.



Long-term Relationships

We value the trust placed in us by our customers and partners, and we are committed to building long-term relationships with them.



Our Service

We understand that businesses rely on their communication and security systems to operate smoothly and efficiently, which is why we are committed to providing exceptional customer service and support.



Networking Solution and troubleshooting

Reliable and efficient network connectivity is essential for the smooth operation of any business

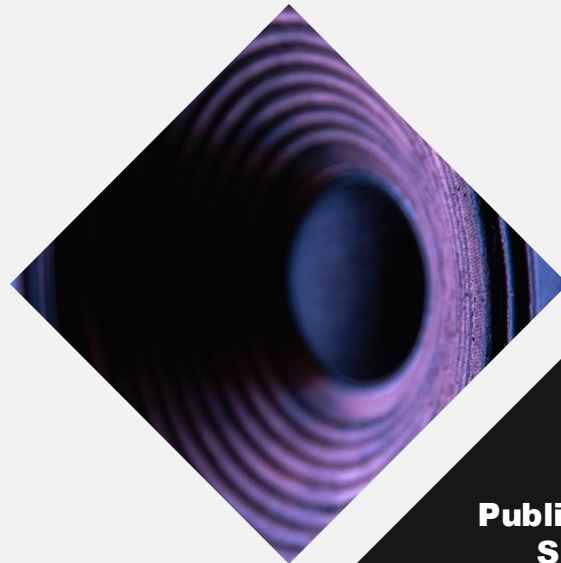


Call Center Solution

We are committed to delivering reliable, high-quality services that exceed our clients' expectations.

Our Service

We are committed to delivering reliable, high-quality services that exceed our clients' expectations. We take pride in building long-lasting relationships with our clients and strive to provide exceptional customer service every step of the way



Public Address Solution

We understand that effective communication is essential for the smooth operation of any establishment

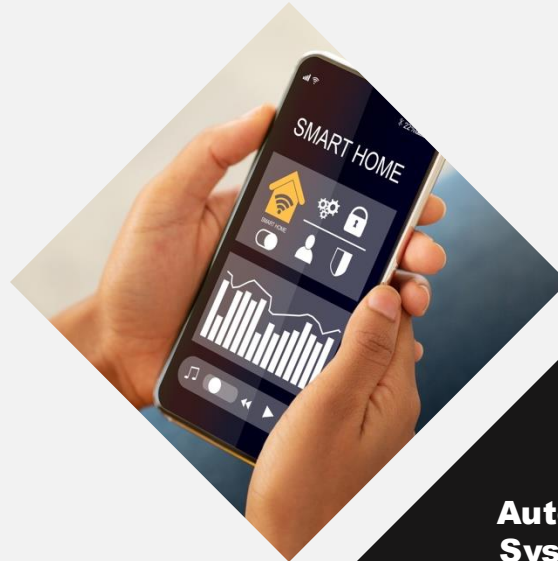


CCTV Solution

CCTV solutions to businesses, homes, and other establishments. We understand that security is a top priority

Our Service

Our team of experienced professionals is well-versed in the latest automation technologies and can provide customized solutions tailored to meet the specific needs of our clients.



Automatiuon System KNX

We offer a wide range of services including process automation, industrial automation, home automation, and more.



Smart Security System

Our Smart Security System solutions include a variety of advanced features such as motion detection, facial recognition, remote monitoring,.

Networking & IP Telephone System

Our company is a trusted provider of Networking and IP Telephone System solutions, specializing in delivering seamless communication experiences for businesses of all sizes. With a customer-centric approach and a team of highly skilled professionals, we aim to provide cutting-edge technology solutions that enhance productivity, efficiency, and collaboration.

Services and Solutions:

Networking Solutions:

We offer end-to-end networking solutions tailored to meet the unique requirements of businesses. Our services include network design, implementation, and optimization, ensuring robust and secure connectivity across your organization. We specialize in designing scalable and reliable networks that support data, voice, and video communications.

3CX
PARTNER

Yeastar

Foreedge

Yealink



DATA CENTER

Provide comprehensive data center infrastructure management services to optimize the performance and efficiency of IT infrastructure.



Wireless Solution

Wi-Fi access point installation, network configuration, and security implementation. We ensure comprehensive coverage, high-speed connectivity



IP Phone Solution

wide range of IP phone, our offerings include IP desk phones, conference phones, cordless phones, and video phones

Foreedge



إبتكار الحلول الذكية

Official Disturbutor

موزع معتمد لدى فوردج

SMART NETWORK SYSTEM SOLUTIONS



CCTV NETWORKING

- AI PoE switches
- AI CLOUD and 500 meter ultra long transmission series



SMB+WIFI NETWORKING

- Full Gigabit/2.5G/10G uplink switches series
- WiFi6 wireless AP series



INDUSTRIAL NETWORKING

- 10G core industrial rack switches
- Industrial Ethernet (PoE) switches



SYSTEM INTEGRATION NETWORKING

- 40/100G data center level switches
- L2/L3 Core Networking Series switches



**3-YEAR
WARRANTY**

ضمان 3 سنوات



Smart Antenna Design

5th gen smart antenna X-sense
Stacked ultra-high-density
antenna design
360° zero dead zone



IoT Integartion

Integrated BLE/Zigbee module
No extra investment
Ready for Future



AI Cloud

Lifetime FREE
Anytime Anywhere Monitoring
One-click AI Optimization

Router

Wireless

Switch



Foreedge is a global technology company specializing in **advanced networking and communication infrastructure solutions**. The company focuses on delivering cutting-edge products and services that empower digital transformation across multiple industries — including education, hotels, healthcare, industrial manufacturing, energy, transportation, smart cities, data centers, and telecommunications operators.

100G Network Switches



S6700-24TF-2QF

Network Port : 24*10G SFP+ Port
Uplink Port : 2*40/100G Optical Port
Switching Capacity : 880Gbps
Forwarding Rate: 540Mpps
Machine Power Consumption: ≤59W

10G Network Switches



S5700-24GP-4TFR

Network Port : 24*GE PoE
Uplink Port : 4*10G SFP+
Switching Capacity : 128Gbps
Forwarding Rate: 95.2Mpps
PoE Consumption: Total:300W

10G Network Switches



S5700-48GP-4TFR-700W

Network Port : 48*GE PoE
Uplink Port : 4*10G SFP+
Switching Capacity : 176Gbps
Forwarding Rate: 130.9Mpps
PoE Consumption: Total:700W

10G Network Switches



S5700-24F-8G-4TF

Network Port : 24*SFP+8*GERJ45(Combo)
Uplink Port : 4*10G SFP+
Switching Capacity : 128Gbps
Forwarding Rate: 95.2Mpps
Packet Buffer: 12M

L3 Switch Managed



Integrated PoE



AI VLAN



AI Extend



L3 Managed



APOLLO Cloud



Foreedge is a global technology company specializing in **advanced networking and communication infrastructure solutions**. The company focuses on delivering cutting-edge products and services that empower digital transformation across multiple industries — including education, hotels, healthcare, industrial manufacturing, energy, transportation, smart cities, data centers, and telecommunications operators.

Managed Switches



AI2010GX

Network Port : 8*GE PoE
Uplink Port : 2*SFP
PoE Consumption : 96W
Forwarding Rate: 14.9Mpps
Switching Capacity: 20Gbps

Managed Switches



PS3024GS-250W

Network Port : 24*GE PoE
Uplink Port : 2*SFP
PoE Consumption : 250W
Forwarding Rate: 38.7Mpps
Switching Capacity: 52Gbps

Managed Switches



PS3024GS-400W

Network Port : 24*GE PoE
Uplink Port : 2*SFP
PoE Consumption : 400W
Forwarding Rate: 38.7Mpps
Switching Capacity: 52Gbps

AI PoE Switch



AI1016G-250W

Network Port : 16*GE PoE
Uplink Port : 2*SFP
PoE Consumption : 150W
Forwarding Rate: 26.8Mpps
Switching Capacity: 36Gbps





Foreedge is a global technology company specializing in **advanced networking and communication infrastructure solutions**. The company focuses on delivering cutting-edge products and services that empower digital transformation across multiple industries — including education, hotels, healthcare, industrial manufacturing, energy, transportation, smart cities, data centers, and telecommunications operators.



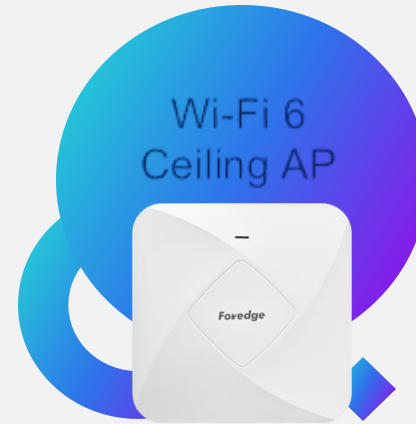
W60HAP V2

Network Port : 1*WAN(GE)+1*LAN(GE)
Wireless rate: AX3000Mbps – 3.0 Gbps
Wireless standard protocol:2.4GHz: 802.11ax/b/g/n
5GHz: 802.11ax/ac/a/n
Antenna: 4*3dBi High gain omnidirectional
Power: PoE 802.3af



W668OAP

Network Port : 1*WAN(GE)+1*LAN(GE)
Wireless rate: AX3000Mbps – 3.0 Gbps
Wireless standard protocol:2.4GHz: 2.4GHz: 802.11ax/b/g/n
5GHz: 802.11ax/ac/a/n
Antenna: 4*6dBi High gain omnidirectional
Power: 48V PoE 802.3at



W618AP

Network Port : 1*WAN(GE)+1*LAN(GE)
Wireless rate: AX3000Mbps – 3.0 Gbps
Wireless standard protocol:2.4GHz: 802.11ax/b/g/n
5GHz: 802.11ax/ac/a/n
Antenna: 4*4dBi High gain omnidirectional
Power: PoE 802.3af Or DC 12V/1.5A



W618HAP

Network Port : 1*WAN(2.5GE)+1*LAN(GE)
Wireless rate: AX3000Mbps – 3.0 Gbps
Wireless standard protocol:2.4GHz: 802.11ax/b/g/n
5GHz: 802.11ax/ac/a/n
Antenna: 4*4dBi High gain omnidirectional
Power: 48V PoE 802.3at Or DC2.0 12V/2A

L2 Switch Managed



Support PoE



Ultra Fast



3.0 Gbps Speed



APOLLO Cloud

Support Mobile App
(iOS Android)



Support CRM
Integration



27/4 Customer Support

Our round-the-clock support services ensure that your customers can always get the help they need, whenever they need it.

Call Monitoring and Quality Assurance

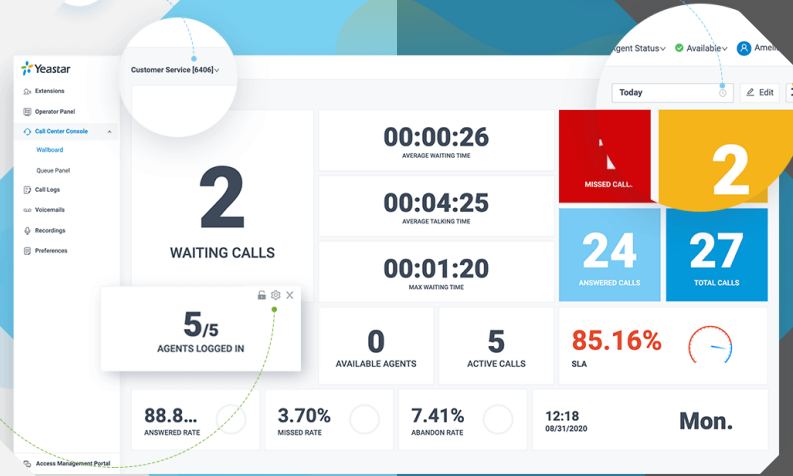
Our call center solutions offer robust call monitoring and quality assurance features. Supervisors can monitor live calls, provide real-time coaching to agents, and access call recordings for evaluation and training purposes.

CRM Integration

We ensure our call center services integrate smoothly with your Customer Relationship Management (CRM) system, permitting a unified view of customer interactions.

Call Control Route

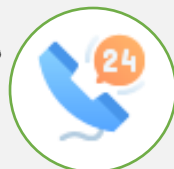
Every call is answered promptly, professionally, and appropriately. From sales calls to customer follow-ups, our outbound call services help you maintain a proactive relationship with your customers.



P-Series

Auto Dailer
Automatically Calling Solution

IP PBX System



P-Series Appliance Edition

General Specifications



Appliances	P50	P550	P70
Base Users / Max Users	50	100 / 200	300 / 500
Max Concurrent Calls	25	30 / 60	60 / 120
Base / Max Call Center Agents	50	100 / 200	300 / 500
Max FXS Ports	8	8	16
Max FXO/BRI Ports	8	8	16
Max GSM/3G/4G Ports	4	4	6
Max E1/T1/J1 Ports	–	1	2
Expandable D30	0	1	2
NFC Read/Write	Yes	Yes	Yes
Ethernet Interfaces	2 x (10/100/1000 Mbps)		
Hard Disk	No	1 SATA (Up to 2TB)	
USB	1 (Portable SSD: Up to 2TB; Flash Drive: Up to 256GB)		
Power Supply	AC 100-240V 50/60HZ 0.6A max	AC 100-240V 50/60HZ 1.5A max	
Size (L x W x H) (cm)	34 x 21 x 4.4	44 x 25.2 x 4.4	44 x 25.2 x 4.4
Weight	1.64 KG	2.37 KG	2.38 KG
Form Factor	1U Rackmount		
Environment	Operation Range: 0°C to 40°C, 32°F to 104°F Storage Range: -20°C to 65°C, -4°F to 149°F Humidity: 10-90% non-condensing		

Innovative Modular Design

Customize telephony interfaces as needed and scale up users and concurrent calls when the business grows.



Expansion Board

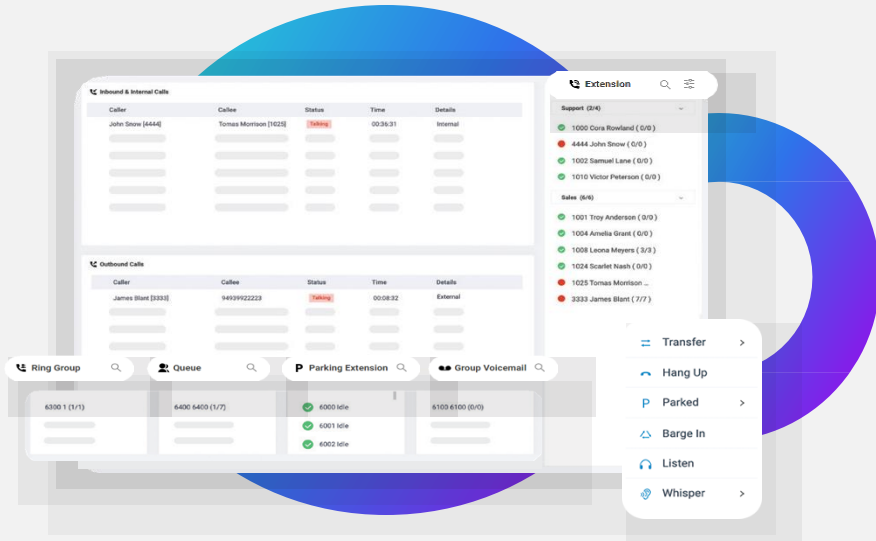
- EX08: 4 Module Slots and 8 Interfaces on the Panel
- EX30: 1 Onboard E1/T1/PRI Interface

Telephony Module

- S2: 2 FXS
- Ports O2: 2 FXO Ports
- B2: 2 NT/TE BRI Ports
- SO: 1 FXO and 1 FXS Port
- GSM/4G: 1 GSM/WCDMA/4G Channel

Expand System Capacity

- D30 DSP: Add 100 Extensions & 30 Concurrent Calls



"Meet and connect your teams and customers from anywhere, instantly and securely. The web-based video"

Integrated Video Conferencing

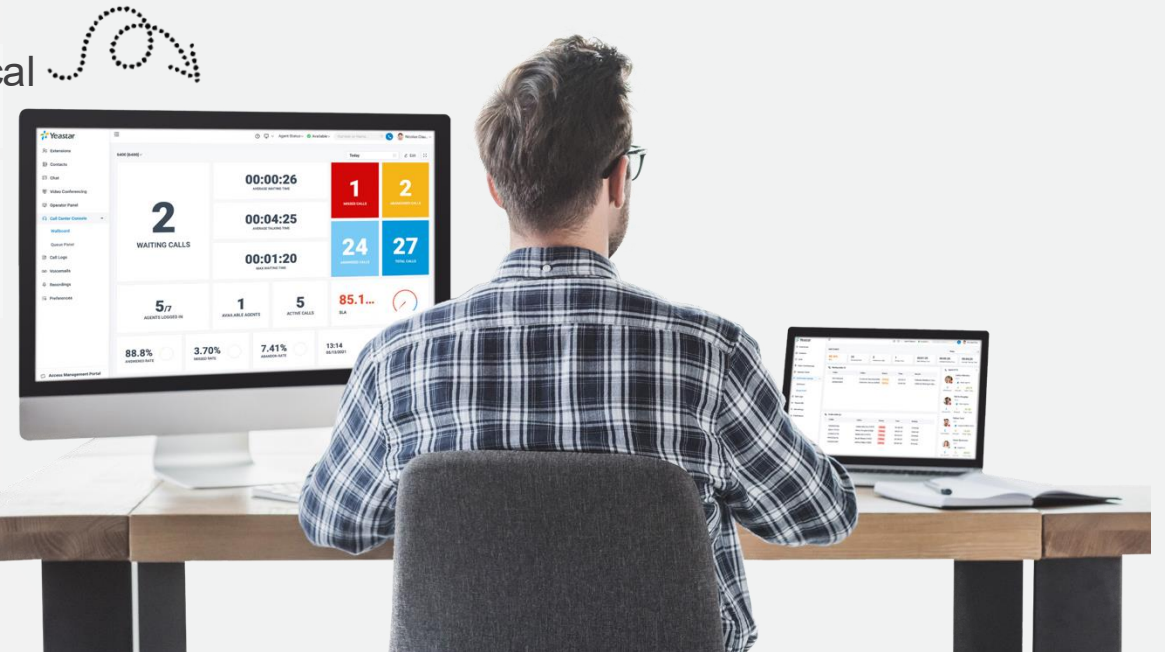


Graphical Operator Panel

Make your receptionist's life easier. Get a holistic view and complete control of your company's call activities in real-time, all in one simple web-based panel.

- Inbound/outbound call activities in one view
- Real-time state of available call destinations
- Drag-and-drop call distribution
- Advanced call control in clicks

- Real-time and historical reports for targeted.
- Analysis based on agent, queue, timeframe, etc.





android

X7A Enterprise IP Phone

Better Video Conferencing Experience

7" Color Touch Screen



As a high-end enterprise IP phone with Android 9.0 OS, Fanvil X7A provides a more intelligent and smoother touch operation experience for the users. 112 DSS keys on the 7-inch color touch screen, built-in Wi-Fi, built-in Bluetooth make daily communication smarter and simpler. Matching an optional USB camera Fanvil CM60, Fanvil X7A can deliver a superb audio with Harman Speaker and video for the group conference.

HD Audio with Harman Speaker



7" Touch Screen



Android



HD Audio



2.4G/5G Wi-Fi



Fanvil IP Phones deliver high-quality voice performance, reliability, and modern design for professional business communication. With HD audio, PoE support, and full compatibility with major VoIP platforms, Fanvil phones provide an efficient and user-friendly experience for offices, call centers, and enterprises of all sizes.



X7 Enterprise IP Phone

HD Audio for speakerphone and handset
7" Color Touch Screen



X4U Enterprise IP Phone

High-definition Audio High-efficiency work
high-resolution 320x240 color displays



X303/X303P Enterprise IP Phone

Cost-effective color screen SIP phone
2.4-inch 320x240 pixel color screen



W610W Portable Wi-Fi Phone

Built-in 2.4GHz & 5GHz Wi-Fi
up to 200 hours standby time



Integrated PoE



Bluetooth



HD Audio



Wi-Fi



Fanvil Audio/Video Intercom combines clear audio, high-definition video, and robust design to deliver secure and efficient communication for access control and building management. It supports SIP protocol, easy integration with IP phone systems, and reliable performance for residential and commercial use.



i64 Video Door Phone

Remote Access Control With Phone
High protection level of IP66 and IK07



i62 Video Door Phone

Speed-dial Touch Button
high-resolution 320x240 color displays



VIK-01 Video Intercom Kit

HD video calls and remotely unlock
Fanvil Link App



i53W SIP Indoor Station

Smooth Access To All Key Functions
7" Color Touch Screen





Alcatel-Lucent Enterprise SIP IP Phones

Alcatel-Lucent Enterprise SIP IP Phones deliver exceptional voice quality, advanced functionality, and elegant design for modern business communication. Built with powerful SIP technology, they ensure seamless integration with a wide range of IP PBX and UC platforms, providing flexibility and scalability for any organization.



M7 DeskPhone

Alcatel-Lucent Enterprise
High-definition Audio



M5 Deskphone

Super wideband audio quality
Large 2.8" colour screen



H3G DeskPhone

High-performance, cost-effective
HD audio, 5-way conferencing



H2P ENTRY-LEVEL BUSINESS

HD audio quality
Exceptional 360° Audio Tuning



Integrated PoE



Bluetooth



HD Audio



Wi-Fi



Yealink

Yealink SIP IP Phones deliver crystal-clear HD voice quality, reliable performance, and intuitive design for efficient business communication. Featuring broad SIP compatibility, easy deployment, and advanced call management, Yealink phones are ideal for offices, call centers, and enterprises of any size.



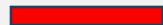
T58W / T58W Pro

Better Video Conferencing Experience
7" Color Touch Screen



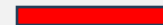
Yealink SIP- T46U

Super wideband audio quality
Large 2.8" colour screen



Yealink SIP- T31P

High-performance, cost-effective
HD audio, 5-way conferencing



Yealink AX86R Wi-Fi Phone

Dual Band Wi-Fi 6 with seamless
2.4" 240 x 320 TFT color screen



Integrated PoE



Bluetooth



HD Audio



Wi-Fi

Support WhatsApp Business Integration



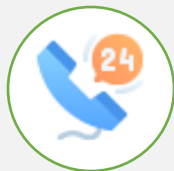
Support CRM Integration



Call Center Solution



Call Center System



Auto Dailer
Automatically Calling Solution



27/4 Customer Support

Our round-the-clock support services ensure that your customers can always get the help they need, whenever they need it.

WhatsApp Integration

Enables your agents to send a reply to WhatsApp messages directly from the system. WhatsApp messages are delivered into the same chat panel as live chat, SMS, and Facebook messages making replying to multiple channels simple.

API and CRM Integration

We ensure our call center services integrate smoothly with your Customer Relationship Management (CRM) system, permitting a unified view of customer interactions.

Call Control Route

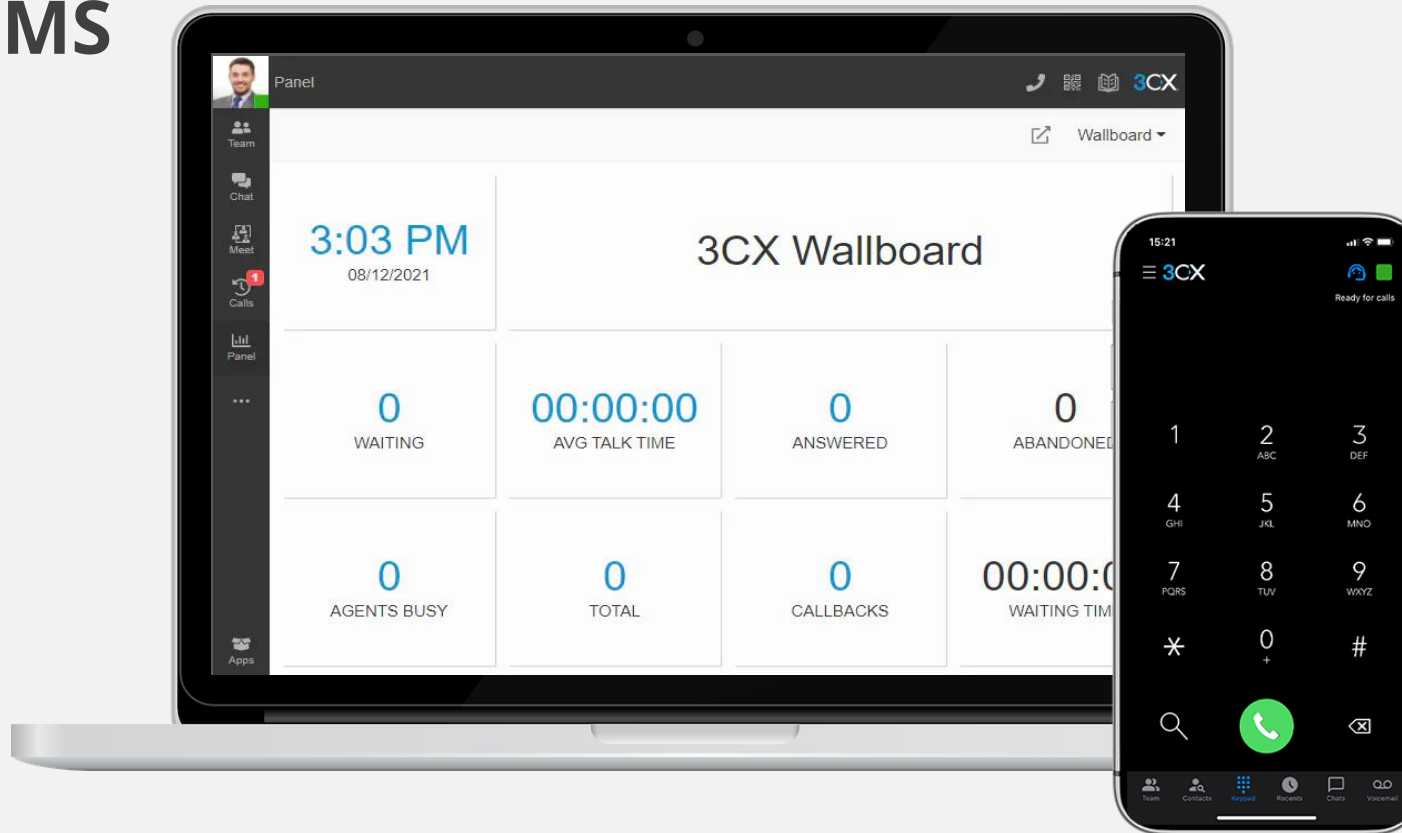
Every call is answered promptly, professionally, and appropriately. From sales calls to customer follow-ups, our outbound call services help you maintain a proactive relationship with your customers.



ابتكار الحلول الذكية

CALL CENTER SOLUTION LIVE CHAT, WHATSAPP, SMS

Reinvented For Remote Workforce



offers a full-featured call center solution with dynamic call queues, reporting, wallboards and CRM integration. Complex and advanced call flows can be designed using a simple drag and drop call flow designer tool. But it's not just calls! incorporates live chat, WhatsApp, Facebook and SMS, to elevate your call center into a full contact center solution.



IP PBX System



CCTV Security System

Comprehensive surveillance and security solutions. We specialize in the design, installation, and maintenance of cutting-edge closed-circuit television (CCTV) systems for various industries and sectors. With a focus on delivering top-quality products and exceptional customer service, we aim to ensure the safety and security of our clients' premises.

recorded footage from anywhere at any time, while video analytics enable intelligent video processing for automated alerts, motion detection, facial recognition, and other advanced functionalities.



CCTV Camera System

Our team of experienced professionals works closely with clients to understand their security requirements and design CCTV solutions tailored to their specific needs



CCTV People Counting Camera

We aim to empower businesses to make data-driven decisions, enhance operational efficiency, and deliver exceptional



Smart Parking & AI Plate Camera

Smart Parking and AI Plate Camera solutions, dedicated to revolutionizing the parking industry through advanced technology



See better

Use time better

Identify better

“Security cameras are not only going to provide reliable and clear images, they should provide peace of mind, security and convenience, day and night. That's why we have introduced AcuSense technology as a standard feature in our next generation Value Series cameras.”

Outstanding Value with Vast Form Factors, Enhanced Image, and AcuSense Motion Detection 2.0

AcuSense takes the Hikvision quality you know and trust to the next level, with AI technology to provide advanced, actionable video analytics. We've made our security solutions even smarter so you see better, know better and are better organized. It's security made better and easier.



Motion Detection



Counting People Detection



Vehicle Detection



BARRIER ACCESS CONTROL SYSTEM

TIME ATTENDANCE SYSTEM



BIOMETRIC ACCESS CONTROL SYSTEM



Finger-print



RFID



Access

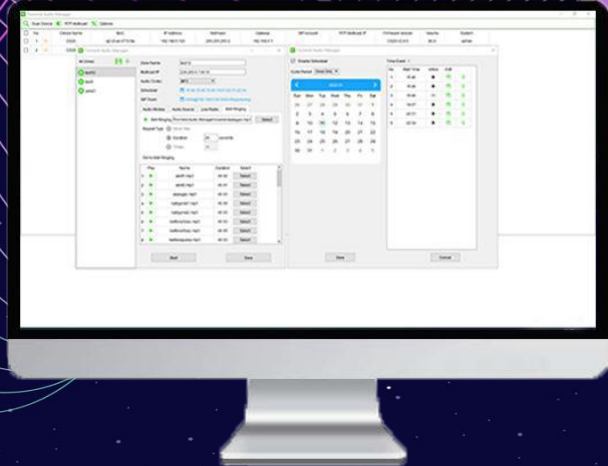


Face

HD Sound SIP Speakers



إبتكار الحلول الذكية



SMART PUBLIC ADDRESS SYSTEM

High quality network speakers, which has wide application in multiple

“Support Azan Islamic Prayer Time”

Public Address

HD

High Broadcast

High quality sound speaker support PoE network, which has wide application.



VoIP Technology

Compatible with VoIP SIP Technology, SIP call, live radio, local media player, universal windows media player.



Software

Audio Manager is an audio broadcast software that converts multi audio input to RTP Multicast.

SIP

HD Sound

Azan Time



Smart Home & Residential Building Solutions **KNX**

Smart Lighting

- Automated lighting systems that can be controlled remotely or set on schedules.
- Energy-efficient LED bulbs with features like dimming and colour change.

Smart Thermostats

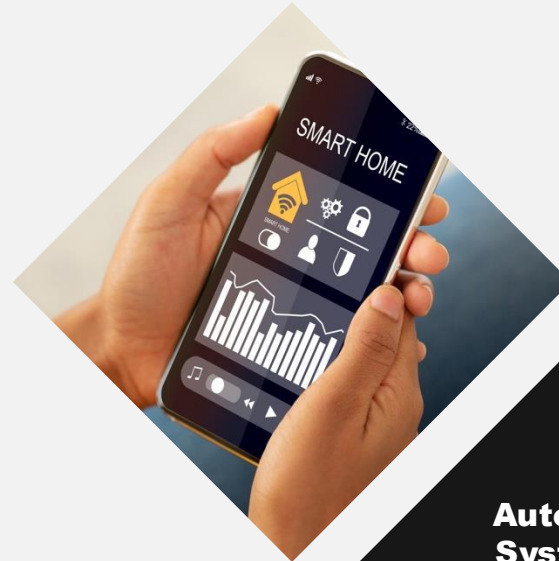
- Devices that learn your heating and cooling preferences to optimize energy usage.
- Remote control via smartphone apps.

Home Security Systems

- Smart cameras, motion detectors, and doorbell cameras that provide real-time alerts.
- Integration with mobile devices for remote monitoring.

Smart Appliances

- Refrigerators, ovens, and washing machines that can be controlled remotely.
- Energy monitoring to track usage and reduce costs.



Automation System KNX

We offer a wide range of services including process automation, industrial automation, home automation, and more.



Automation Wireless Lighting Control

Our smart lighting control solution unlocks the secret to good lighting. Create, customize, and explore a world of possibilities.



KNX Hotel GRMS & Lighting Control Solutions

Guest Room Management System (GRMS) from iBitikar Solutions is designed to ensure an exemplary and gratifying experience for your guests. Our intelligent solutions are based on interactive technology that compliments the exceptional experience you want for your guests.



Security and Cameras



Security and Burglar Alarm



Intercom



Mobile Integration



Heating and Cooling



Lighting Control



Shutter/Blind Control



Push Notification



Scenarios



KNX Smart Home & Residential Building Solutions

Your home functions better when your home and smart products work all together. IBitikar smart home solutions make your life simpler with reliable, intelligent and user-friendly devices. With one single device, anyone in your family can operate the lights, blinds, thermostats, security, concierge and more.



Security and Cameras



Security and Burglar Alarm



Intercom



Mobile Integration



Heating and Cooling



Lighting Control



Shutter/Blind Control



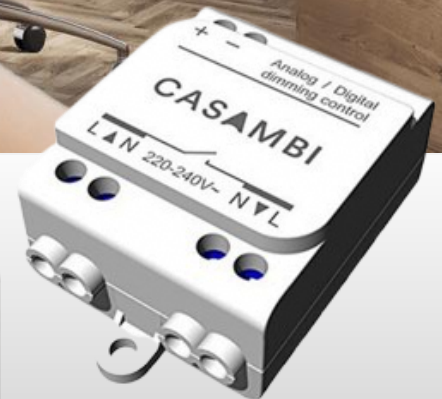
Push Notification



Scenarios

Smart Lighting Control for the Modern World

Advanced lighting controls as easy as possible for all stakeholders across all stages of a system's lifecycle. As the adage goes: Simple can be harder than complex.



Transform your **home, coffee shop, restaurant, or hotel** into a haven of ambiance with the Lighting System. Experience the perfect blend of elegance, functionality, and cutting-edge technology.

Why Choose WIFI Lighting System ?



No additional network connectivity is needed.



Automatically rerouted to prevent a connection drop



All nodes are connected to one another

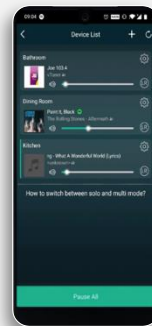
Public Address Integration with KNX

Integrating a Public Address system with KNX not only enhances communication capabilities but also contributes to the overall safety and efficiency of building management. By leveraging these features, organizations can create a responsive environment tailored to their specific needs.

100% Belgian founded in 2001

- Full product range residential solutions – commercial projects – consumer market

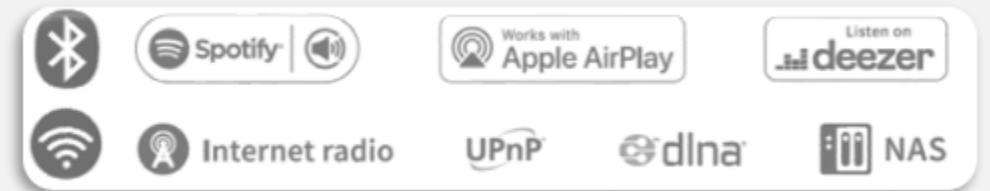
- **Compatibility:** Ensure that all devices are compatible with KNX protocols.
- **Scalability:** Design the system to allow for future expansions or modifications.
- **User Training:** Provide training for staff on using the integrated system effectively.



SMART HYDE

App Features

- Overview zones & music
- Group zones
- Play / Pause all
- Stereo / L / R
- Alarm Clock.
- Sleep Timer
- Equalizer





MONA PANELS

Iconic Design

Glass Touch Screen

Mona bedside panels are the perfect blend of elegance and functionality. Designed to enhance your space, they bring a sleek, modern touch while offering durability and practicality. Transform your bedroom with Mona – where style meets convenience.



Glass surface



(IP65)
Waterproof



Touch operated



Unique design



ROSA PANELS

Iconic Design

Metallic Unique Panels

Rosa panels redefine elegance with their stunning design and premium quality. Perfectly crafted to elevate any space, they add a touch of sophistication and warmth to your interiors. With Rosa, beauty meets durability.



Metal surface



Built-in temperature sensors



Touch operated



Unique design



ORIA PANELS

Iconic Design

Plastic Unique Panels

Oria panels are a masterpiece of modern design, combining sleek aesthetics with top-notch craftsmanship. Perfect for adding a touch of luxury and refinement to any space, Oria panels seamlessly blend style with functionality. Elevate your interiors with Oria.



Various color options



Fully automatic heating-cooling transition



Touch operated



Unique design

Home Theatre / Cinema Solutions

A home theater is an entertainment system designed to replicate the experience and ambiance of a movie theater, utilizing high-quality video and audio equipment. Many people enjoy watching movies, particularly in theaters where large screens and impressive sound effects enhance the atmosphere. With a home cinema system, you can easily achieve this experience at home.

We construct home cinemas to the highest specifications available. The combination of ultra-high-definition (UHD) visuals and 3D sound is truly remarkable, often surpassing the experience of a traditional cinema.

Superior Sound Quality

Advanced audio systems provide immersive surround sound that enhances movie watching.

Social Entertainment

Host movie nights or gatherings in the comfort of your home, creating a cozy atmosphere.

Control Over Environment

You can adjust lighting, sound, and seating for an optimal viewing experience.



Cinematic Experience at Home

Enjoy large screens and high-quality visuals that mimic the theater experience.

Our Process



Initial Consultation

Begin by conducting an initial consultation with our clients to understand their specific requirements, project scope, and objectives



Needs Assessment

Our team of experts conducts a thorough needs assessment, analyzing the project requirements, timeline, and budget considerations.



Proposal and Quotation

Once the solution is developed, we provide a detailed proposal and quotation to the client. This includes a breakdown of the project scope, deliverables, timelines, cost estimates, and terms and conditions.





ROCK

Outsiders, Rock loudspeaker, 130W

Exceptional Power



This outdoor speaker in the shape of a rock blends into the vegetation around a terrace or garden. No distracting elements, just undisturbed enjoyment of every vibration. The AS Rock is water and UV resistant (IP54) and yet has a bass reflex. An extra port through which the low tones fill your garden and you enjoy a particularly warm sound. The opening is specially treated to prevent moisture or water from seeping in. Unique in its kind. The AS rock speaker has a 6.5" driver on board. This allows it to come out particularly powerful. Thanks to the tuned dispersion differential, the music spreads everywhere so that large areas are pimped musically.



Range
< 50 m²



(IP54)
Waterproof



HD Audio



Discreet



White color is available

KURV LINE Iconic Design Exceptional Power

Standing out with simplicity is what this Kurv speaker does. Its acclaimed organic design houses the latest technology. The 5.25" driver with coaxial tweeter is housed in a water-repellent, undulating jacket. You connect it to many an amplifier and bring it to life. For anyone who wants to pamper their eye and eare with a true icon. Thanks to its special 5.25" driver, this speaker generates exceptionally warm vibrations outdoors. It can come out particularly powerful. The downfiring ensures a handsome dispersion in 360°.



Other color white



Range < 50 m²



(IP66) Waterproof



HD Audio



Unique design

Our Timeline

Our company is an IT Solution company that has been providing innovative solutions to businesses for the past seven years. Our timeline reflects the growth and evolution of our company, as we have expanded our services and expertise to meet the changing needs of our clients.

2017

We focused on building a strong foundation by hiring a team of experienced network engineers and establishing relationships with key technology vendors

2018

We continued to grow our client base and expand our services, including software development, project management, and IT support.

2019

We were recognized by industry experts for our innovative solutions and outstanding customer service. This recognition helped us to attract new clients and further establish our reputation as a leading IT telecommunications company.

2021

We are proud to offer a comprehensive suite of services, including network engineering, software development, project management, IT support, and mobile application development

2022

Our seven years of experience, combined with our commitment to innovation and customer service, make us the ideal choice for businesses looking for a reliable partner to meet their communication needs.

25



إبتكار الحلول الذكية

8 YEARS OF EXPERIENCED

WE SERVE WITH LOVE

we are committed to providing exceptional customer service. We understand that our clients rely on us to keep their communication systems running smoothly, and we take this responsibility seriously. We work closely with our clients to understand their unique needs and provide customized solutions that meet their specific requirements.



إبتكار الحلول الذكية

Contact Us

Get in Touch

Kingdom of Saudi Arabia - Riyadh, Al Yarmouk District, Al Sahaba Road, Building No. 13251, Second Floor, Office No. 4

→ Location



www.ibtikar.com.sa



+966 54310 2345



info@ibtikar.com.sa



Join To Our Social Media Channels



[ibtikar_sa](https://www.instagram.com/ibtikar_sa)



[ibtikar.sa](https://www.tiktok.com/@ibtikar.sa)



[ibtikar.sa](https://www.snapchat.com/add/ibtikar.sa)



[054 310 2345](https://wa.me/966543102345)



Flowers snop - وردة حزين - Gift shop

SNB AlAhli
بنك الأهلي السعودي

Legends Gaming
العاب الانسايطير

Google

THANK YOU



إبتكار الحلول الذكية

